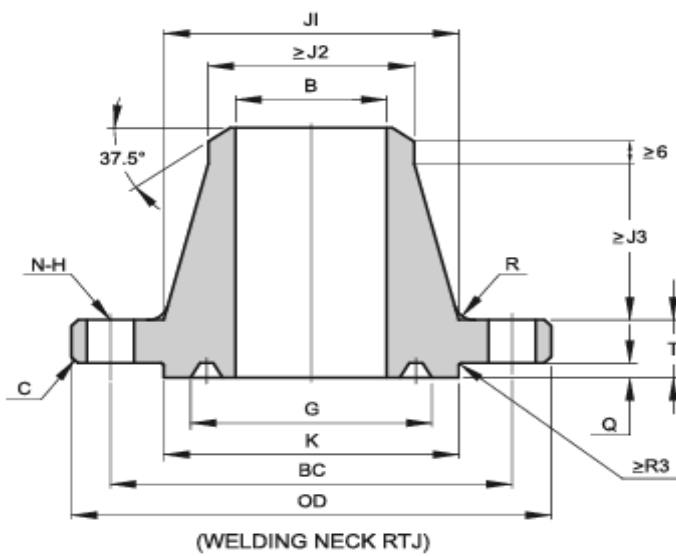
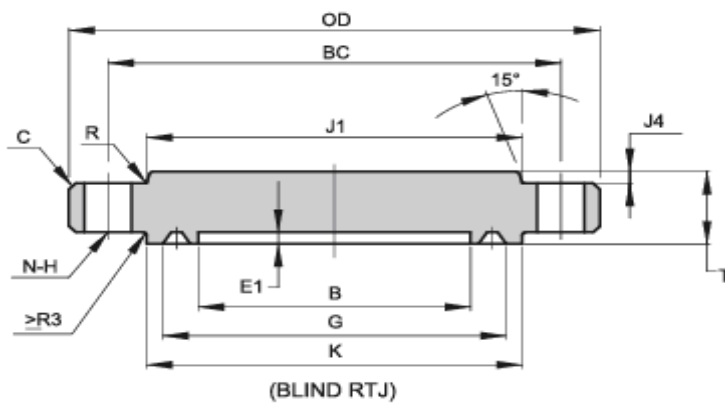


## API 6A TYPE 6B 10000 PSI BLIND & WELDING NECK FLANGES



Size	B	OD	C	E1	Q	G	K	T	J1	J2	J3	J4	R	BC	N	H	BX
1 13/16"	46.8	185	3	-	5.56	77.77	105	42.1	88.9	65.1	48.5	-	10	146.1	8	23	151
2 1/16"	53.2	200	3	-	5.95	86.23	111	44.1	100	74.7	51.6	-	10	158.8	8	23	152
2 9/16"	65.9	230	3	-	6.75	102.77	132	51.2	120.7	92.1	57.2	-	10	184.2	8	26	153
3 1/16"	78.6	270	3	-	7.54	119	152	58.4	142.1	110.2	63.5	-	10	215.9	8	29	154
4 1/16"	104	315	3	-	8.33	150.62	185	70.3	182.6	146.1	73.1	-	10	258.8	8	32	155
5 1/8"	131	360	3	9.5	9.53	176.66	221	79.4	223.8	182.6	81	6.4	10	300	12	32	169
7 1/16"	180.2	480	6	11.1	11.11	241.83	302	103.2	301.6	254	95.3	9.7	16	403.2	12	42	156
9 "	229.4	550	6	12.7	12.7	299.06	359	123.9	374.7	327.1	93.7	9.7	16	476.3	16	42	157
11"	280.2	655	6	14.3	14.29	357.23	429	141.3	450.9	400.1	103.2	14.2	16	565.2	16	48	158
13 5/8"	346.9	770	6	15.9	15.88	432.64	518	168.3	552.5	495.3	114.3	17.5	16	673.1	20	51	159
16 3/4"	426.2	870	6	8.3	8.33	478.33	576	168.3	655.6	601.7	76.2	30.2	19	776.3	24	51	162
18 3/4"	477	1040	6	18.3	18.26	577.9	697	223.1	752.5	674.7	155.6	25.4	16	925.5	24	61	164
21 1/4"	540.5	1145	6	19.1	19.05	647.88	781	241.3	847.7	762	165.1	31.8	21	1022.4	24	67	166

**Note:**

1. RING NUMBER BX,
2. C should be the max value
3. Tolerance and Ring Gasket according to API 6A-20TH